

Schauer Arts and Activities Center

Technical Information – Touring Companies

147 N Rural Street
Hartford, WI 53027

Revised 12/2011

www.schauercenter.org

This document available at: www.schauercenter.org



Randy Schultz, Technical Director

262-670-0560 x207
262-670-0937 (fax)
262-224-2975 (cell)
randy@schauercenter.org

Katrina Sturtzen, Assistant Technical Director

262-670-0560 x214
262-670-0937 (fax)
262-949-3423 (cell)
katrina@schauercenter.org

STAGE INFORMATION

Proscenium – Hard	22'-11" x 59'-0"
Proscenium – Max w/Curtain & Teaser	18'-0" x 50'-0"
Depth – to Upstage Posts	26'-0"
Depth – to Cyclorama	24'-6"
Depth – to Upstage Traveler	24'-0"
Width – SL Post to SR Post	59'-0"
Width – SL Leg to SR Leg – Max	50'-3"
Width – SL Leg to SR Leg – Min	29'-0"
Deck to Bottom of Borders	19'-0"
Deck to Bottom of Teaser	18'-0"
Upstage Crossover	11'-10"
Stage Right Wing - Wall to Post	3'-6"
Stage Left Wing – Wall to Post	5'-8"

Floor - Pine, tongue and groove, sprung floor, finish is flat black paint
No penetrations are allowed into stage floor

RIGGING / SOFT GOODS

No fly lines, all soft goods are permanent and may not be relocated.

Fixed 1½" dia pipe grid above deck	23'-0" from deck
All soft goods dead hung	23'-0" from deck
(3) Electrics on electric winches	22'-6" maximum out

Main Curtain

Dark Blue Velour, Pleated, 21'-10" tall x 59'-0" wide, Bottom Chain, Manual Operate SL

Teaser

Dark Blue Velour, Pleated, 5'-0" tall x 59'-0" wide

Borders (3)

Black Velour, Flat, 4'-0" tall x 59'-0" wide

Legs (3 sets)

Black Velour, Pleated, 21'-10" tall x 16'-0" wide, Pull track – 15'-0" long SL & SR

Travelers (one upstage and one mid stage)

Black Velour, Pleated, 21'-10" tall x 59'-0" wide, Operate SL

Cyclorama

Sky Blue, Seamed, Bottom Pipe Available, 23' tall x 59'-0" wide, Pull Track – 59'-0" long

Video Screen

Front Projection, 20'-0" W x 22'-0" T, 14'-10" from front of stage, 52'-10" to Projector platform

ELECTRICS / LIGHTING

Lighting System Control

2	CD80 Supervisor rack w/96 Dual 2.4kW dimmers each rack
1	ETC Express 48/96 Console
5	Control / DMX-in Positions: (Control Room, Center House, SL Proscenium, SR Proscenium, USR Wall)

Stage Circuits – 2P&G

1 st Electric	20 Circuits
2 nd Electric	16 Circuits
3 rd Electric	16 Circuits
Deck Level	15 Circuits
Balcony Level	12 Circuits
Grid boxes	12 Circuits
Work Lights	3 Circuits

Front of House Circuits – 2P&G

1 st Catwalk	9 Circuits	25'-2" to Deck – 6'-8" to Proscenium
2 nd Catwalk	30 Circuits	25'-2" to Deck – 19'-8" to Proscenium
House Right Mezzanine	4 Circuits	Horizontal Pipe 14'-6" from Deck
House Left Mezzanine	4 Circuits	Horizontal Pipe 14'-6" from Deck
House Right Balcony	10 Circuits	Horizontal Pipe 23'-9" from Deck
House Left Balcony	12 Circuits	Horizontal Pipe 23'-9" from Deck
Control Booth	2 Circuits	
House Lights (Hard Wired)	18 Circuits	
Work Lights (Cat 2)	1 Circuit	

Lighting Instruments – 2P&G

	<u>Quantity</u>	<u>Lamp</u>
Strand SL 19°	28	GLA/575w
Strand SL 26°	5	GLA/575w
Strand SL 36°	5	GLA/575w
Strand SL 15° – 32° zoom	16	GLA/575w
Strand Studio Fresnel 6"	22	BTN/750w
Altman 65Q Fresnel 6"	14	BTN/750w
ETC Source Four*	30	HPL/575w
	Lens Tube 19°	6
*46 lens Tubes Available but	Lens Tube 26°	18
only 38 Instruments	Lens Tube 36°	18
	Lens Tube 50°	4
ETC Par / 4 lenses each	36	HPL/575w
	VNSP, NSP, MFL, WFL	
Lycian 1209 HP 575 Spot w/Telrad Sights	2	MSR 575H
Altman 3 Cell Cyc	5	FFT/1000w
Altman R-40 4 Circuit Strip 6'-0"	6	Par Flood 250W Floor or C-Clamp
14'-0" Portable Light Booms	4	
6'-0" Portable Light Booms	2	
3'-0" Portable Light Booms	6	

Accessories

2P&G Two-Fers
2P&G Extension Cords (5', 10', 25', 30')
2P&G / Edison & Edison / 2P&G Adapters
Color Frames for all fixtures
(12) Barn Doors
Gobo Holders (12) ETC "B" and (23) Strand "B"
(2) ETC S4 Iris

Road Show Power

200 amp 3 phase, Cam Lock or Tails, Location – Upstage Left Wall

SOUND

Rack Mounted / Permanent Mounted Equipment

1	BIAMP Audia EXPI & AUDIA EXPO Processing Unit
1	Lab Gruppen C 10:4X Amp – Chan 1 Main Speakers, Chan 2 Subs
1	Crown CTs 600 Amp – Side Fills
1	Crown Com-Tech 410 Amp – Delays
1	Crown Com-Tech 410 Amp – Booth Monitors
2	Rane MA 62 Amp – 6 Channels for Monitor Mixes
1	Listen Technologies Assisted Listening - FM
6	House speakers – Ceiling Mounted, Renkus-Heinz TRC121 (2) Main Floor, 23'-0" from Deck, 18" from Proscenium. (2) Stadium, 23'-0" from Deck, 24'-8" from Proscenium (2) Main Floor Side Fills, 23'-0" from deck, 18' from Proscenium
2	Front Fill Speakers Renkus Heinz CF81-2 Self Powered (Not Permanent)

FOH / Portable Equipment

1	Yamaha LS9-32
1	Midas – Venice 320
2	Mackie 24-4 VLZ Pro Mixer
1	Ashley GQX-3102, 31 Band, 2 Channel E.Q.
2	Ashley MQX 2150, 15 Band, 2 Channel E.Q.
1	Lexicon MPX 200 Effects Processor
2	Alesis 3630 Processor
1	PreSonus ACP88 – Eight Channel Compressor / Limiter / Gate
1	Sony Mini Disk Player – MDS-E10
1	Gemini CFX-40 Dual CD player
1	Teac W-790R Dual Cassette Player
1	Marantz CDR832 CD Recorder/Player

Microphones

9	Shure SM58
9	Shure SM57
6	Shure Beta 58
4	Shure SM81-LC
1	AKG D112
4	Sennheiser e604 Drum Mics
4	Shure Wireless Receivers – SLX2 UHF Freq: 518 – 542 (4 Beta 58 SLX2 Mics and 2 SLX1 Body Mics)
5	Choir Mics, AT8531
3	Crown PCC 160

Speakers / Stands / Mic Stands

10	Sonic 15" monitor speakers
2	JBL TR125 Speakers
3	Sonic LT10 Speakers
4	Ultimate speaker stands
16	Atlas Microphone stands, Round Base, Boom or Strait
2	Atlas Microphone stands, Round Base, Strait
2	Atlas Microphone stands, Round Base, Short Boom

Snakes / Boxes

2	8 Channel Snake – Whirlwind SB8TI	(Stage Right or Stage Left Proscenium)
1	16 Channel Snake – Whirlwind SB16TI	(Stage Right Proscenium Only)

Road Show Power

200 amp 3 phase, Tails only
Location –SR Proscenium

Communications- Production Intercom

1	Master Station
8	Belt packs
6	Fixed Stations
14	Single Muff Headset

PORTABLE SOUND SYSTEM

- 1 Mackie 1402-VLZ Pro Mixer
- 1 QSC RMX 850 Amp
- 1 Teac CD-P1440R CD Player
- 1 Teac W-790R Double Cassette Deck
- 1 Audio Technica Handheld wireless – ATW R-19 UHF Freq: 951.90

PIANOS

- 1 5'-0" 1920's Henry Miller Grand Piano – Brown
- 1 5'-0" 1997 Weber Grand Piano - White
- 1 7'-0" 2001 Yamaha Grand Piano – Black
- 1 2001 Young Chang Upright – Black
- 1 2006 Charles Walter Upright - Black

STAGING

- 6 4' x 8' Aluminum / Wood Wenger Platforms, Black Surface Finish – 8" tall
- 6 4' x 8' Aluminum / Wood Wenger Platforms, Black Surface Finish – 16" tall
- 11 4' x 8' Aluminum / Wood Wenger Platforms, Black Surface Finish – 24" tall
- 10 Misc Pie Shape Pieces
- 8 3 Step Wenger Choir Riser
- 1 Marley Dance Floor (5 pieces 42' x 6' & 2 pieces 30' x 6')
- 60 Wenger Student Chairs
- 300 Padded non-folding chairs
- 6 Manhasset Music Stands w/Lights (Additional stands and lights available with notice)
- 2 Wood Podium w/light and Podium Mic

VIDEO EQUIPMENT

- 1 Sanyo PLC-XM100 video Projector 5,000 Lumens (3 Lenses)
- 1 Sanyo PLC-XU32 video projector 1,700 Lumens
- 1 Front projection video screen. 20' wide x 22' tall, electric operation, located center stage, permanent
- 1 Front projection video screen. 8' wide x 8' tall, portable, free standing
- 1 Da-Lite Fast Fold 9'x12' rear/front projection screen. free standing or grid hung

MISCELLANEOUS EQUIPMENT

- 1 4'-0" fiberglass step ladder
- 2 8'-0" fiberglass step ladders
- 1 12'-0" fiberglass step ladder
- 1 28'-0" fiberglass extension ladder
- 1 24'-0" Little Giant ladder (2 sided step ladder)
- 1 Ariel Scissors Lift, Electric, 19'-0" max platform working height

BACK STAGE

Orchestra Loft

Located at balcony level upstage of the stage. 11'-0" deep x 59'-0" wide. Located above and behind performers. Video Monitor System available upon request.

Loading Dock

10' x 10' covered overhead door at grade, no dock, 33'-0" to stage.
(1) 50 amp Twist lock Shore Power
(1) 20 amp Edison type plug

Scene Shop

Directly behind stage, construction / painting allowed. Shop Sink

Performers Areas

- (1) Star Dressing Room - 8'x 11', Counter, Mirror, Video Monitor, Small Refrigerator
- (1) Chorus Dressing Room – 15' x 16', Counter, Mirrors, Video Monitor, in wall Ironing Board
- (1) Chorus Dressing Room – 17' x 21', Counter, Mirrors, Video Monitor, in wall Ironing Board
- (2) Bathrooms – Each with (1) Toilet, (1) Shower, (1) Sink, Mirrors
- (1) Common Area between Bathrooms – (2) Sinks, Counter, Mirrors, Full Size Clothes Washer and Dryer
- (1) Greenroom – 12' x 16', Mirror, Video Monitor, Adjacent Counter w/sink
- (1) Clothes Steamer, (1) Iron, (1) Full Size Ironing Board

SCHAUER CENTER TECHNICAL POLICIES - TOURING COMPANIES

A **TOURING COMPANY** is defined as any event that has been “Purchased” by the Schauer Arts and Activities Center.

1. Technical Advance:

COMPANY must contact Schauer Technical Director at least two weeks prior to scheduled event to discuss any backstage theater set-up and technical needs (staffing, staging, sound, lighting, AV equipment needs, etc.) related to public performance. If no contact is made reasonably in advance of the rental event, the Schauer cannot guarantee that set-up and technical requests will be accommodated. COMPANY is to make no decisions on behalf of the Schauer Technical Director. All questions and coordination from the Company or Company’s appointed personnel must be directed to the Schauer Technical Director.

2. Amplification / Lighting Levels:

Schauer reserves the right to control amplification levels and determines what is acceptable for any event held in the Ruth A. Knoll Theater or any other area of the facility. If the COMPANY fails to abide by the amplification levels determined by the Schauer, then the performance will be immediately halted without any liability whatsoever on the part of the Schauer. Also Schauer Technical Director in cooperation with the COMPANY shall determine the location of any sound equipment (including sound board and on-stage speakers) to be placed in the theater and the house light level to be maintained during any public event.

3. Staffing:

If, at any time, the actions or performance of a COMPANY provided technician or any other personnel furnished by a the COMPANY are determined, for any reason, by the Schauer’s Technical Director or his/her designated representative to be detrimental to the safe operation of the Ruth A. Knoll Theater, then that person shall be prohibited from performing any work on or around the stage areas of the theater. If need be, the person will be required to immediately leave the building.

4. Set Construction / Assembly:

- No set construction or painting on stage unless pre-approved by the Schauer Technical Director.
- ABSOLUTELY NO spray paint to be used in the facility without the permission of the Schauer Center Technical Director.
- Blue and Pink Styrofoam and cardboard is prohibited by the Fire Department unless properly treated and approved by the Schauer Center Technical Director.
- Any equipment or set pieces should be placed on stage in such a way that set-up will not damage any portion of the facility. Anchoring into the stage floor or any wall surface or attaching items to or physically securing stage curtains is strictly prohibited.
- Use of tape on painted surfaces must be approved by Schauer Center Technical Director. Gaff tape is the only approved tape to use on the stage floor, if using glow tape you must first place a piece of gaff tape on the floor first.
- Poster Putty is the only approved adhesive to be used on walls or doors, etc, tape is not allowed.

5. Strike:

Strike of set-up and load out must happen immediately following final performance unless alternative arrangements have been made in advance with Schauer management. Failure to remove items immediately following an event may result in disposal of such items and possibly a cost incurred to the COMPANY for disposal of such items.

6. Fire / Smoke:

Schauer Technical Director must pre-approve any smoke or fire effects prior to use (including candles). Failure to do so could result in fines from the city/state and/or termination of the event.

7. Posted Signage:

COMPANY and its members must follow all posted signs and rules.

8. Food / Drink:

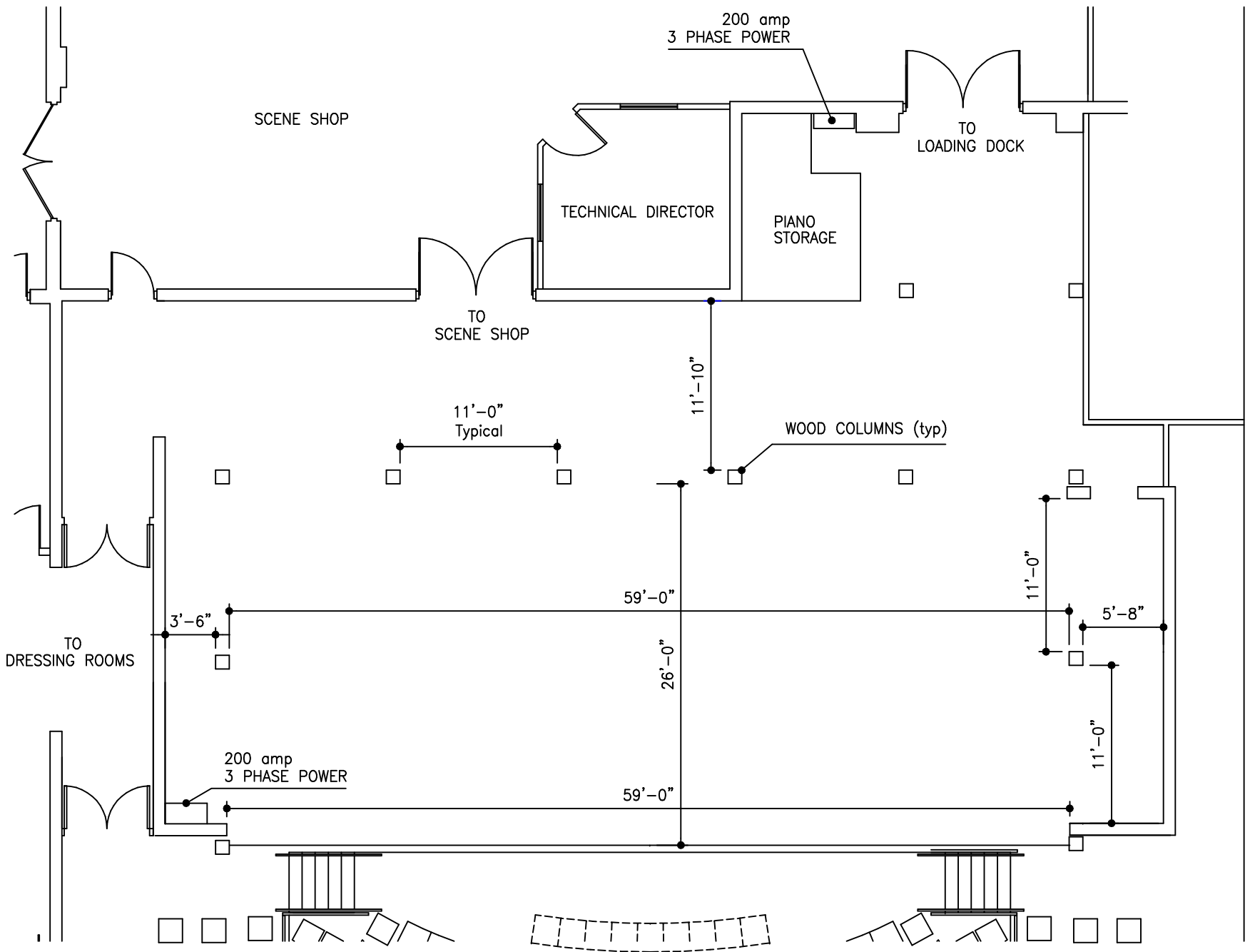
ABSOLUTELY NO food or drink allowed in control room. Drink is only allowed at house sound position if ALL equipment at house position is the property of the COMPANY. Food and drink is allowed on stage if it being used as a prop, any props “spilled” on stage must be cleaned up as soon as possible.

9. Emergency Exits:

All exits, paths to exits, and fire extinguishers must be kept clear at all times. Failure to do so may result in the immediate termination of the event and / or fines from the fire department.

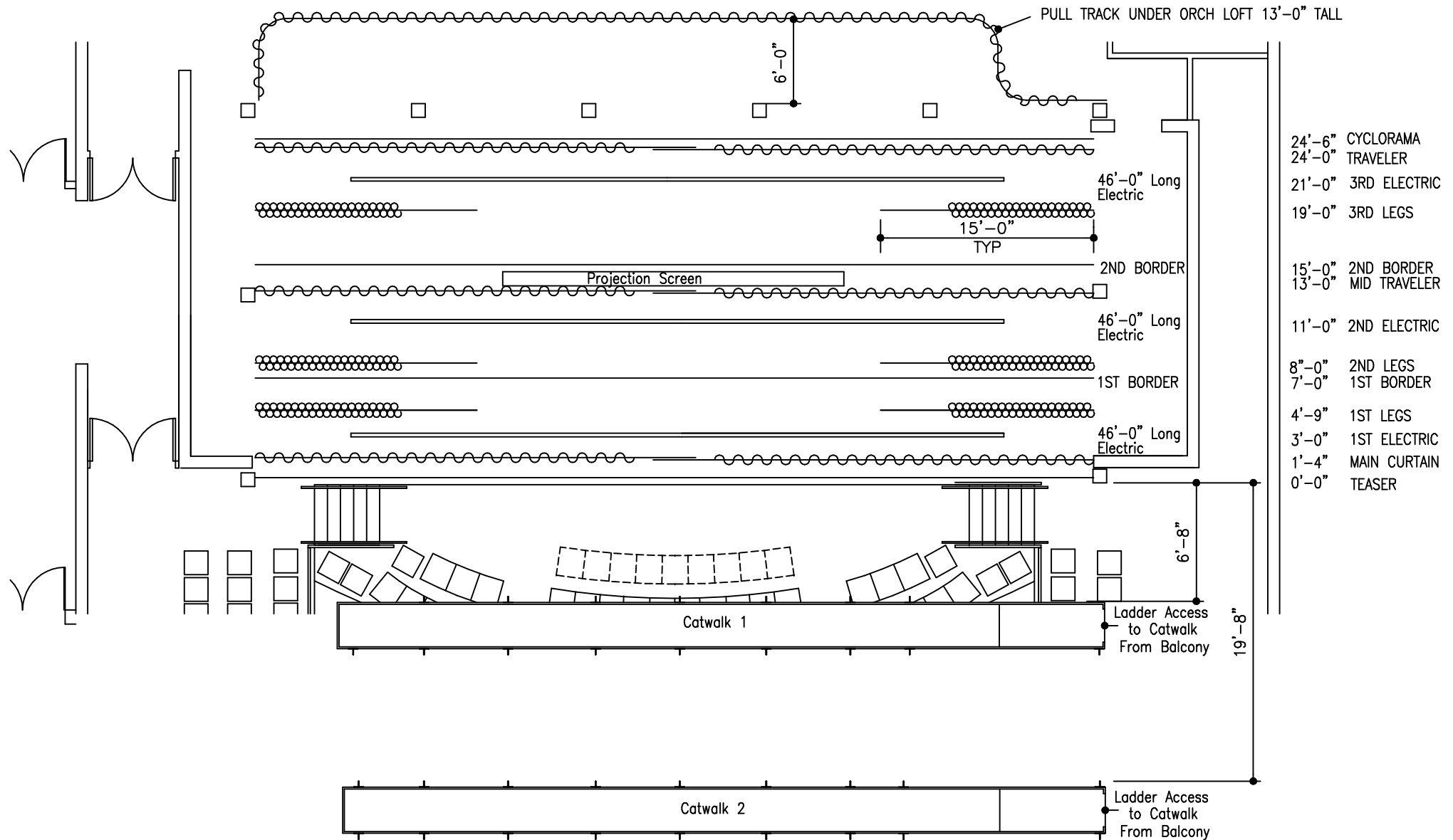
10. Smoking / Alcohol:

Smoking in the building is prohibited. Smoking areas are provided outside the building. Alcohol is not allowed to be carried into the Schauer Center. All alcohol must be purchased from Schauer Center Bar service, when available.



SCHAUER ARTS AND ACTIVITIES CENTER

STAGE PLAN

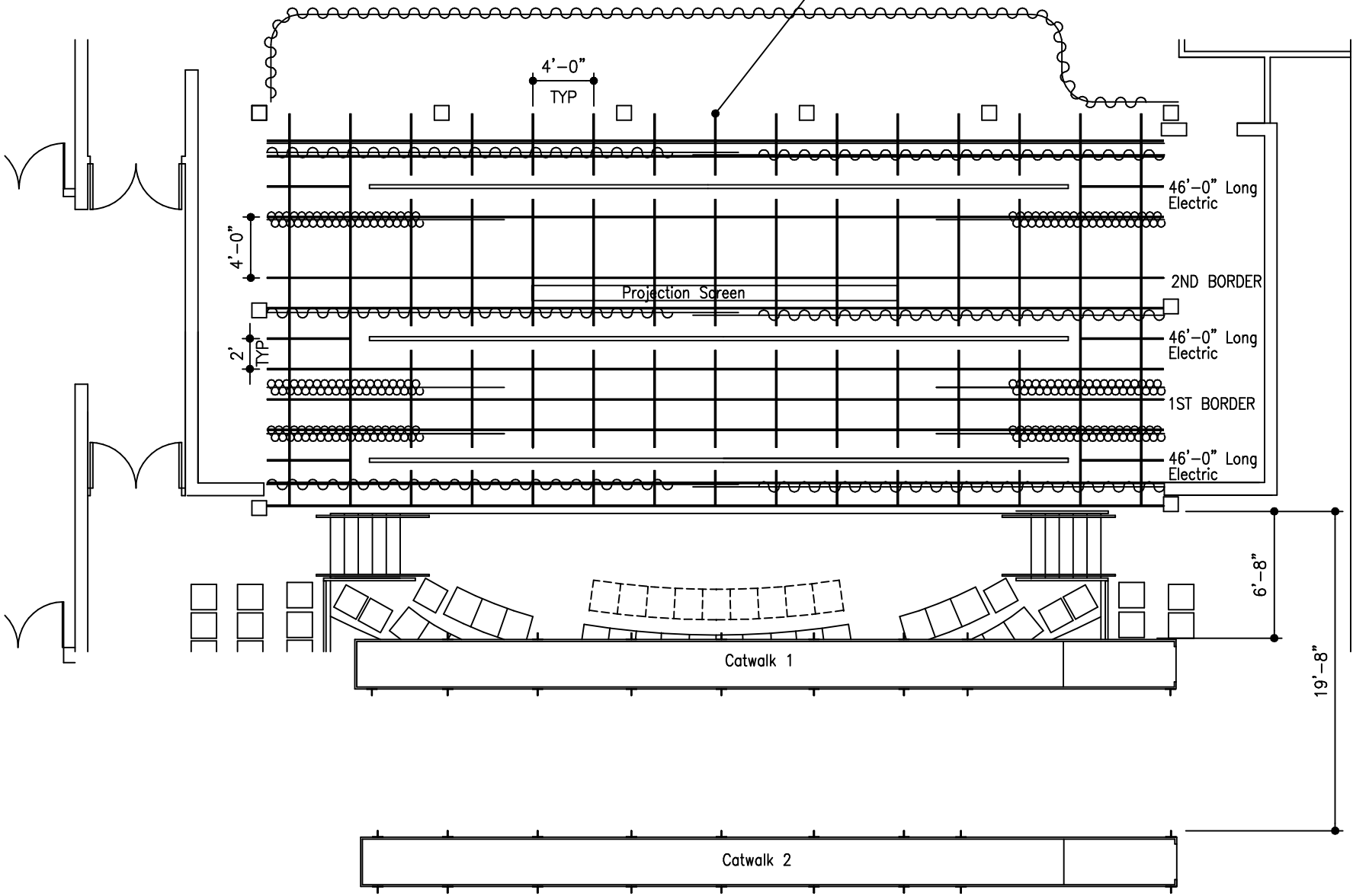


SCHAUER ARTS AND ACTIVITIES CENTER

RIGGING PLAN

NTS

ALL GRID PIPE IS 1 1/2" OD DIA

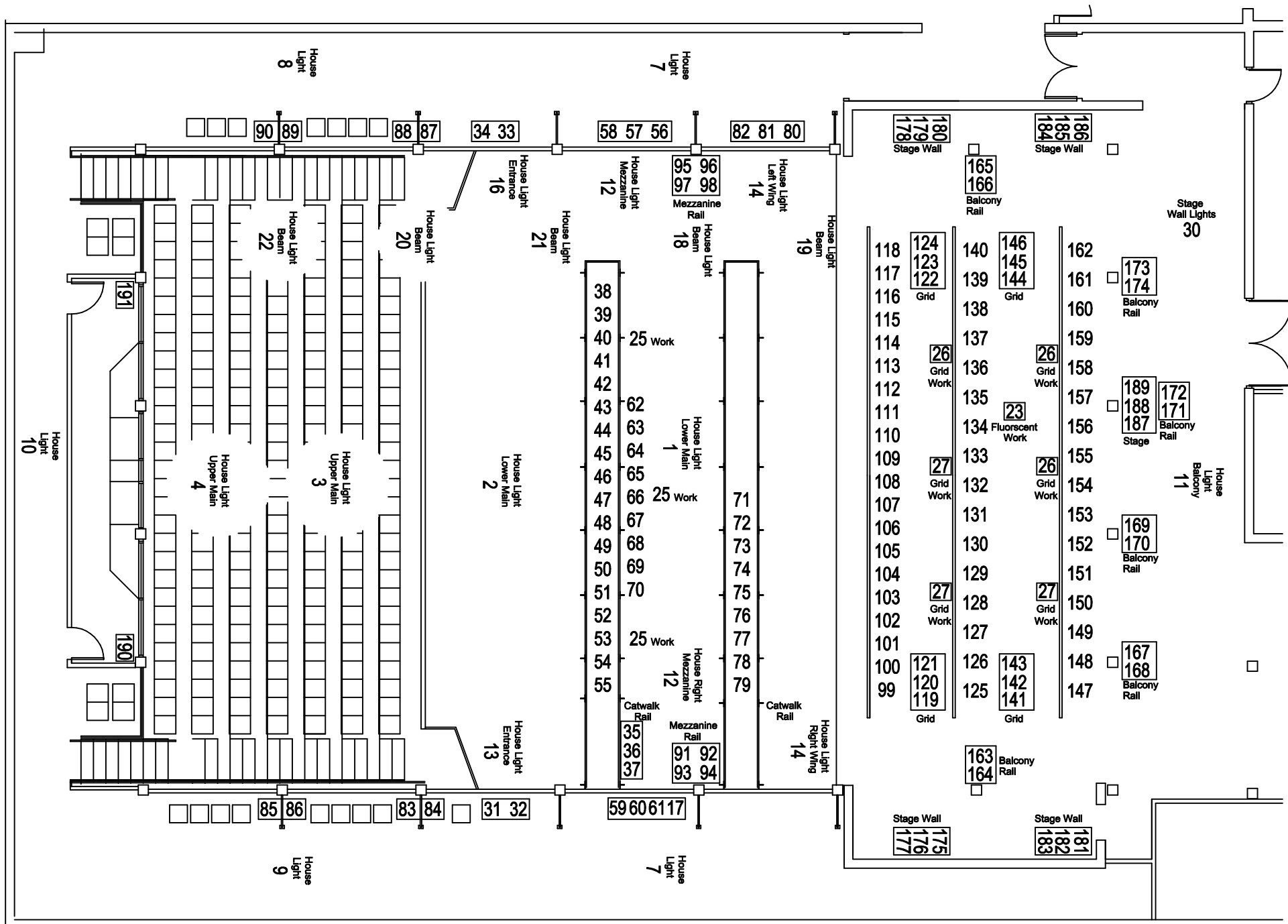


- 24'-6" CYCLORAMA
- 24'-0" TRAVELER
- 21'-0" 3RD ELECTRIC
- 19'-0" 3RD LEGS
- 15'-0" 2ND BORDER
- 13'-0" MID TRAVELER
- 11'-0" 2ND ELECTRIC
- 8'-0" 2ND LEGS
- 7'-0" 1ST BORDER
- 4'-9" 1ST LEGS
- 3'-0" 1ST ELECTRIC
- 1'-4" MAIN CURTAIN
- 0'-0" TEASER

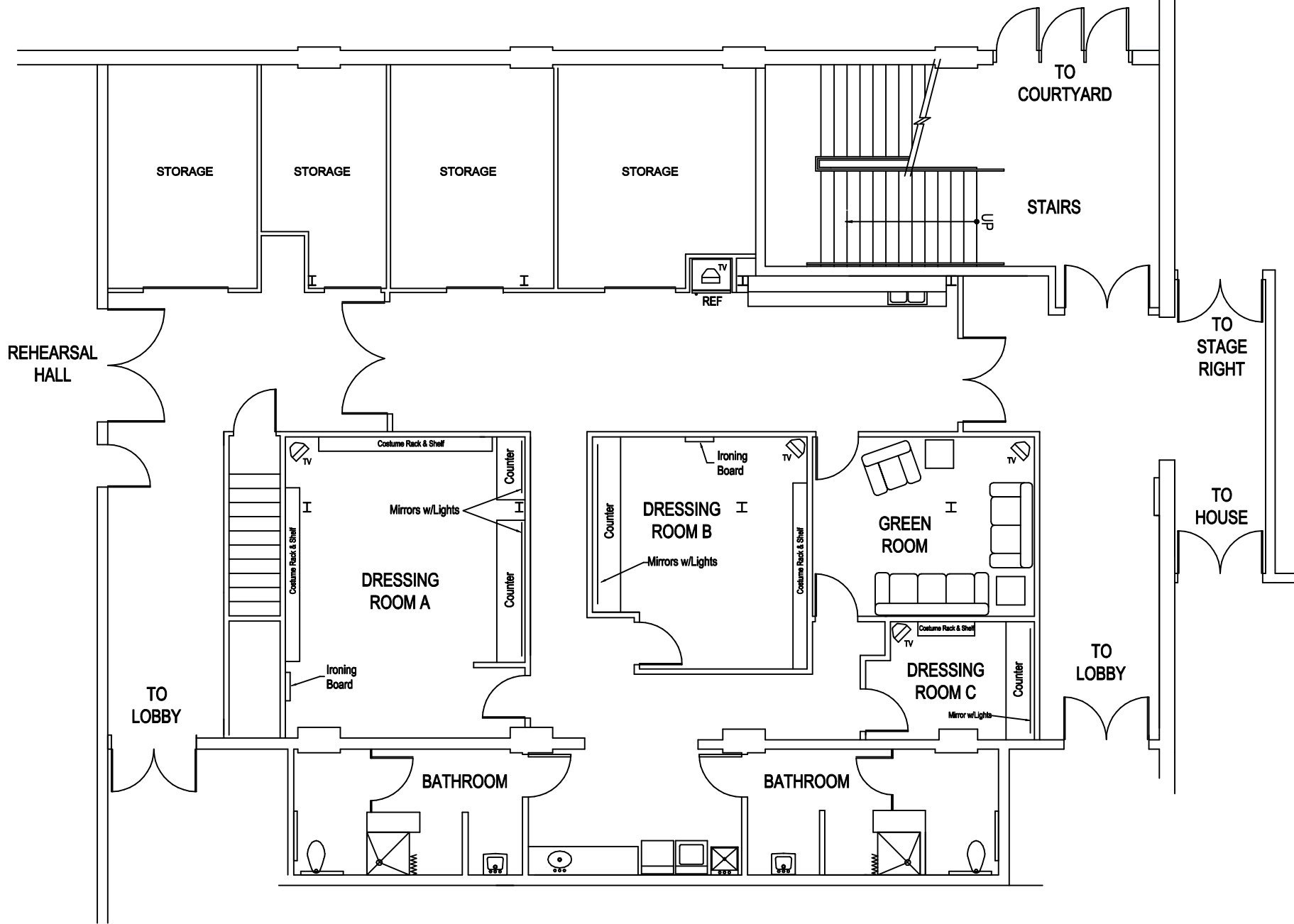
SCHAUER ARTS AND ACTIVITIES CENTER

RIGGING PLAN W/Grid

NTS



SCHAUER ARTS AND ACTIVITIES CENTER CIRCUIT PLAN



SCHAUER ARTS AND ACTIVITIES CENTER
DRESSING ROOM AREA



LOADING DOCK

THEATER

SCHAUER CENTER

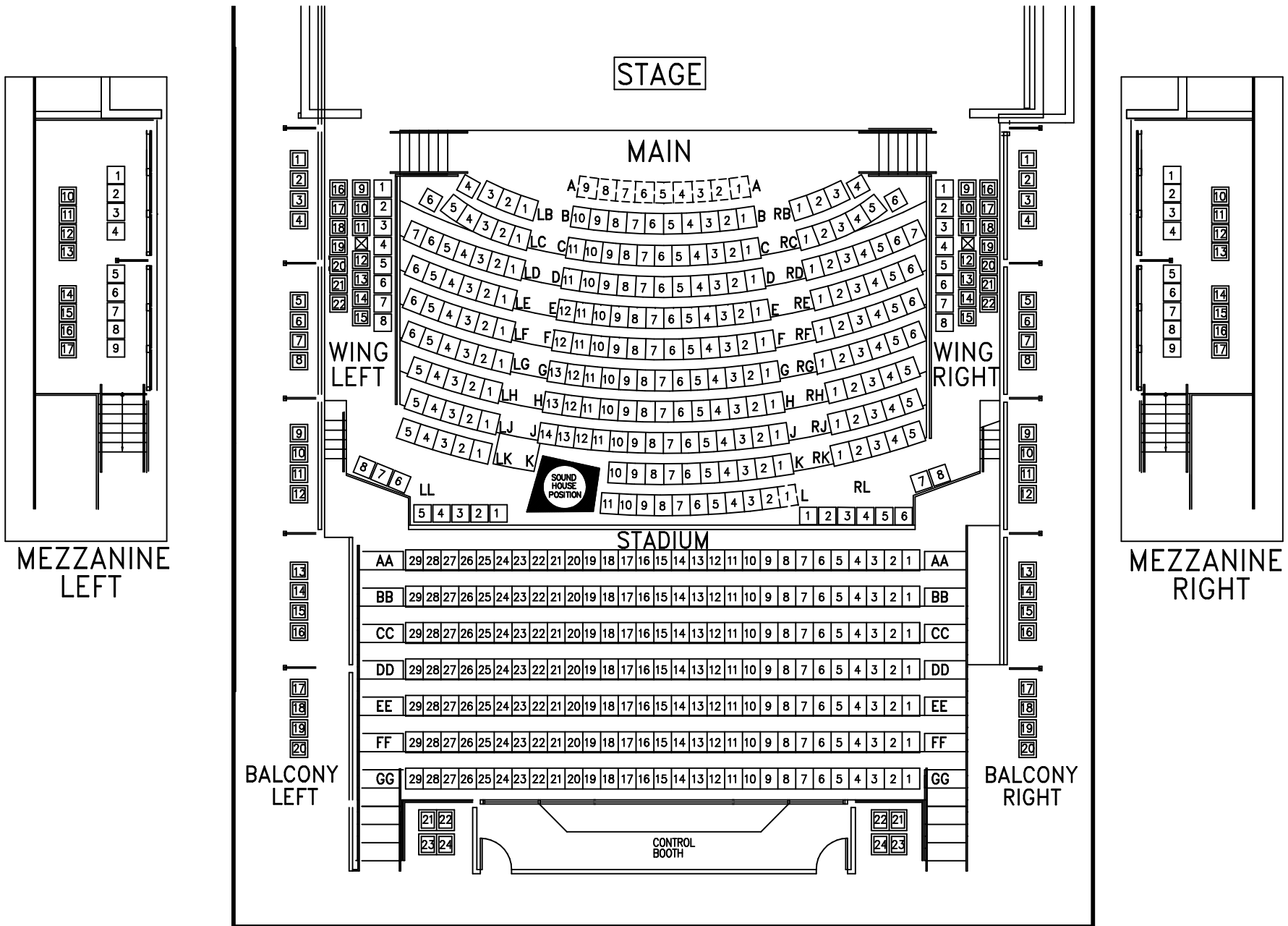
AUTO MUSEUM

HARTFORD
REC CENTER

MAIN ENTRANCE

N Rural St

147 N Rural St, t



SCHAUER ARTS AND ACTIVITIES CENTER

SEATING PLAN