



LOADING DOCK

THEATRE

AUTO MUSEUM

SCHAUER CENTER

MAIN ENTRANCE

**HARTFORD
REC CENTER**

**N. RURAL
STREET**

**HWY 83/
MAIN STREET**

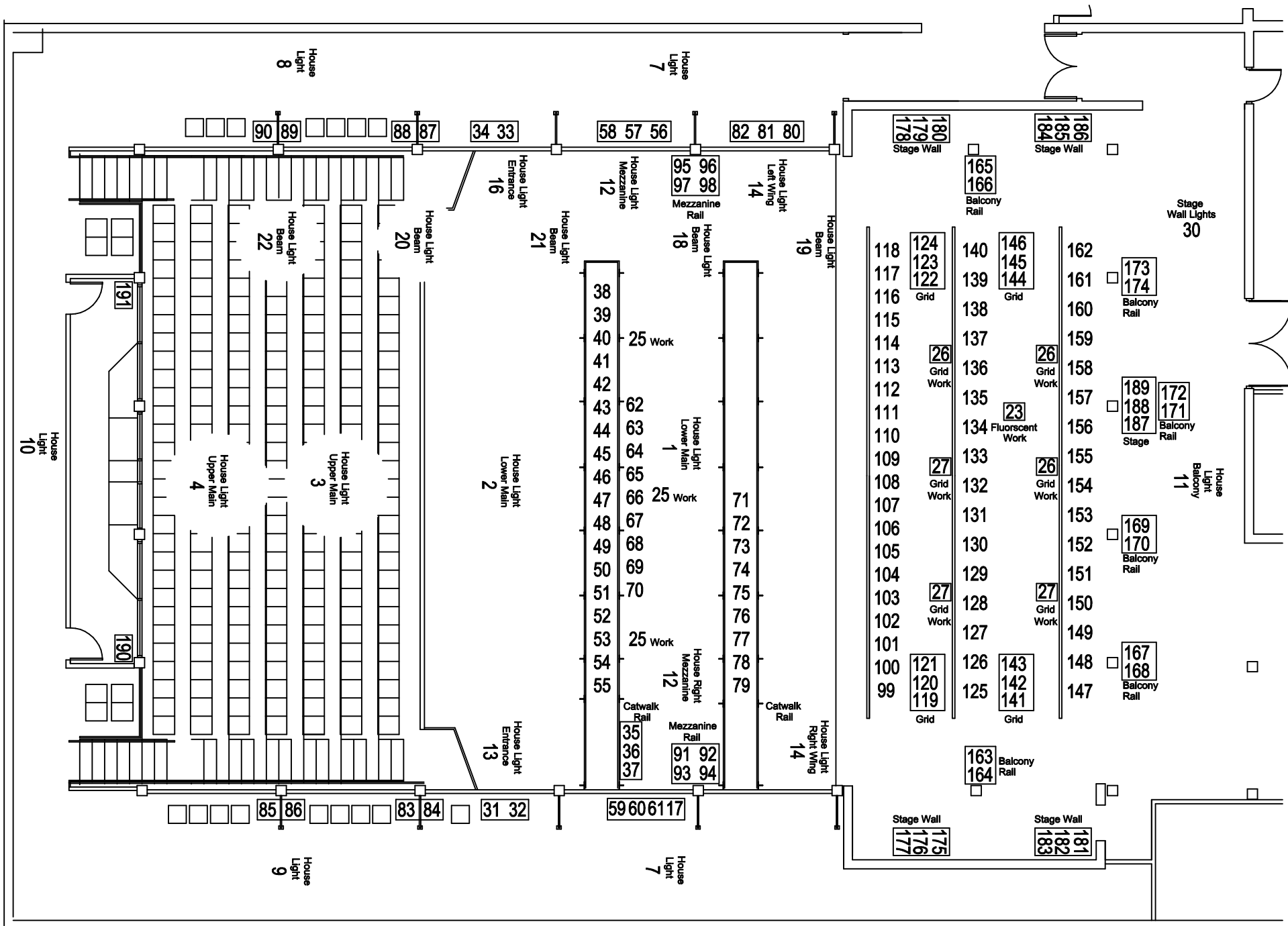
HWY 60/SUMMNER STREET

©2010 Google

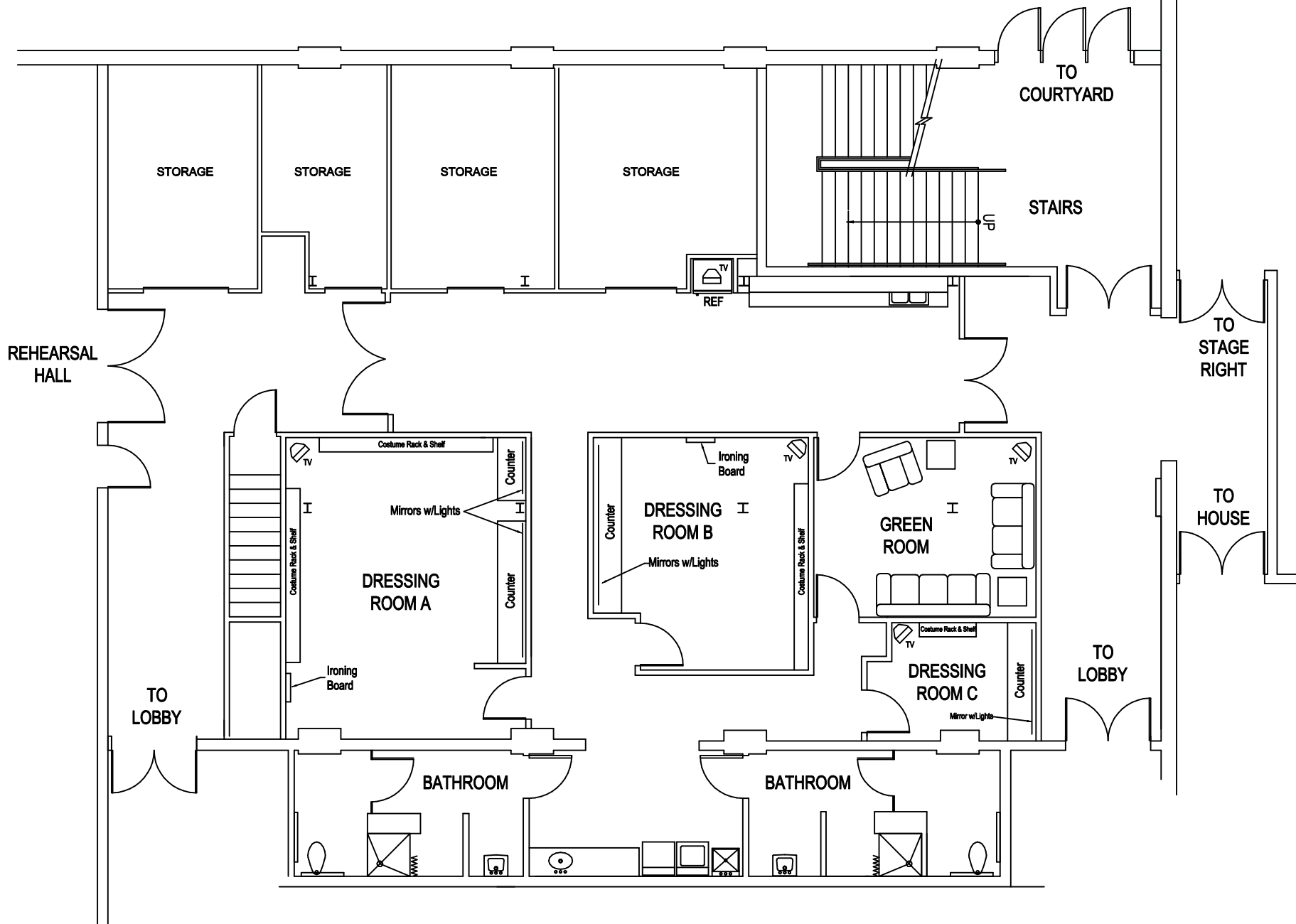
Imagery Date: 5/27/2010

43°19'08.01" N 88°22'50.24" W elev. 964 ft

Eye alt 1940 ft

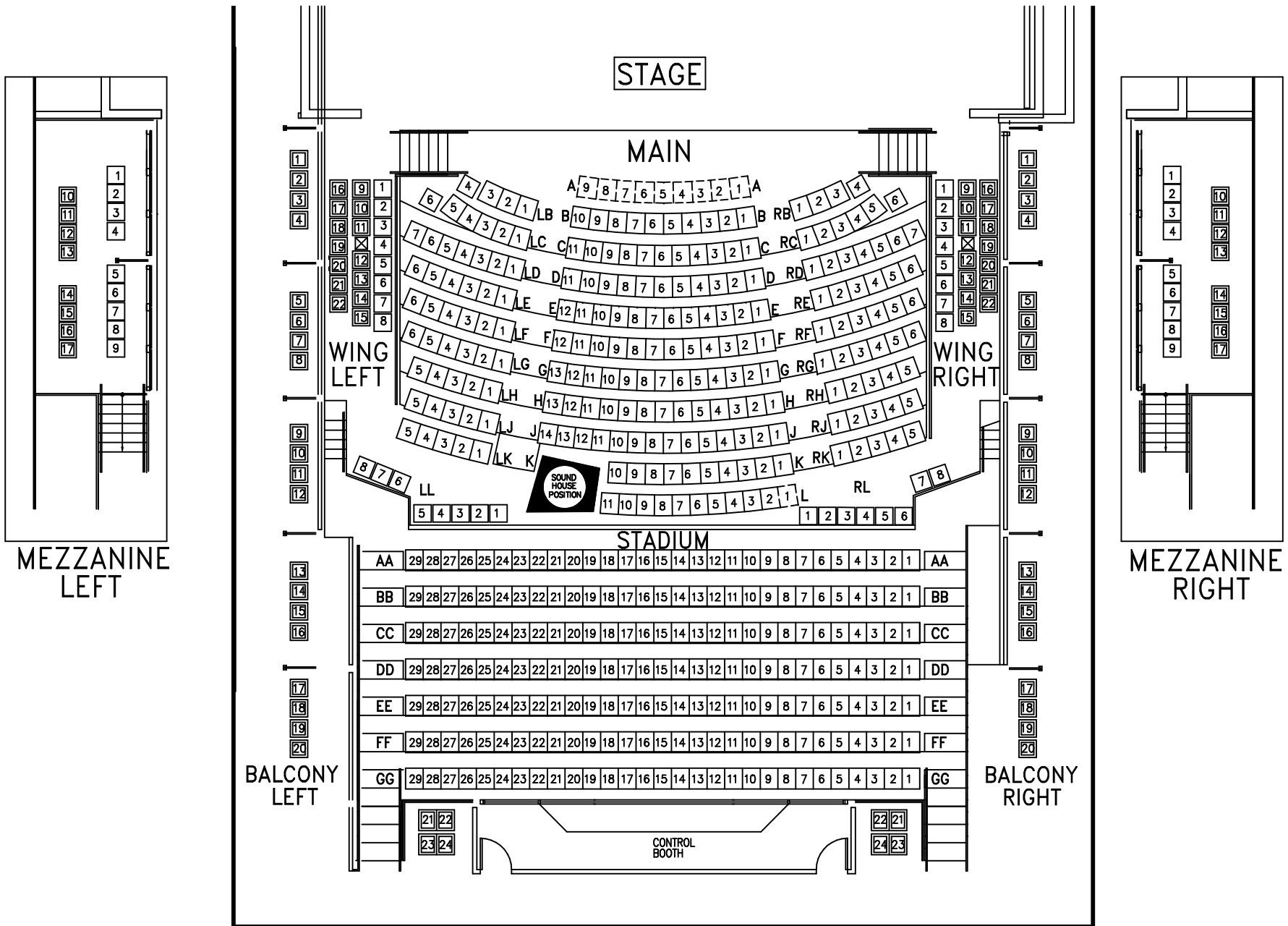


SCHAUER ARTS AND ACTIVITIES CENTER CIRCUIT PLAN



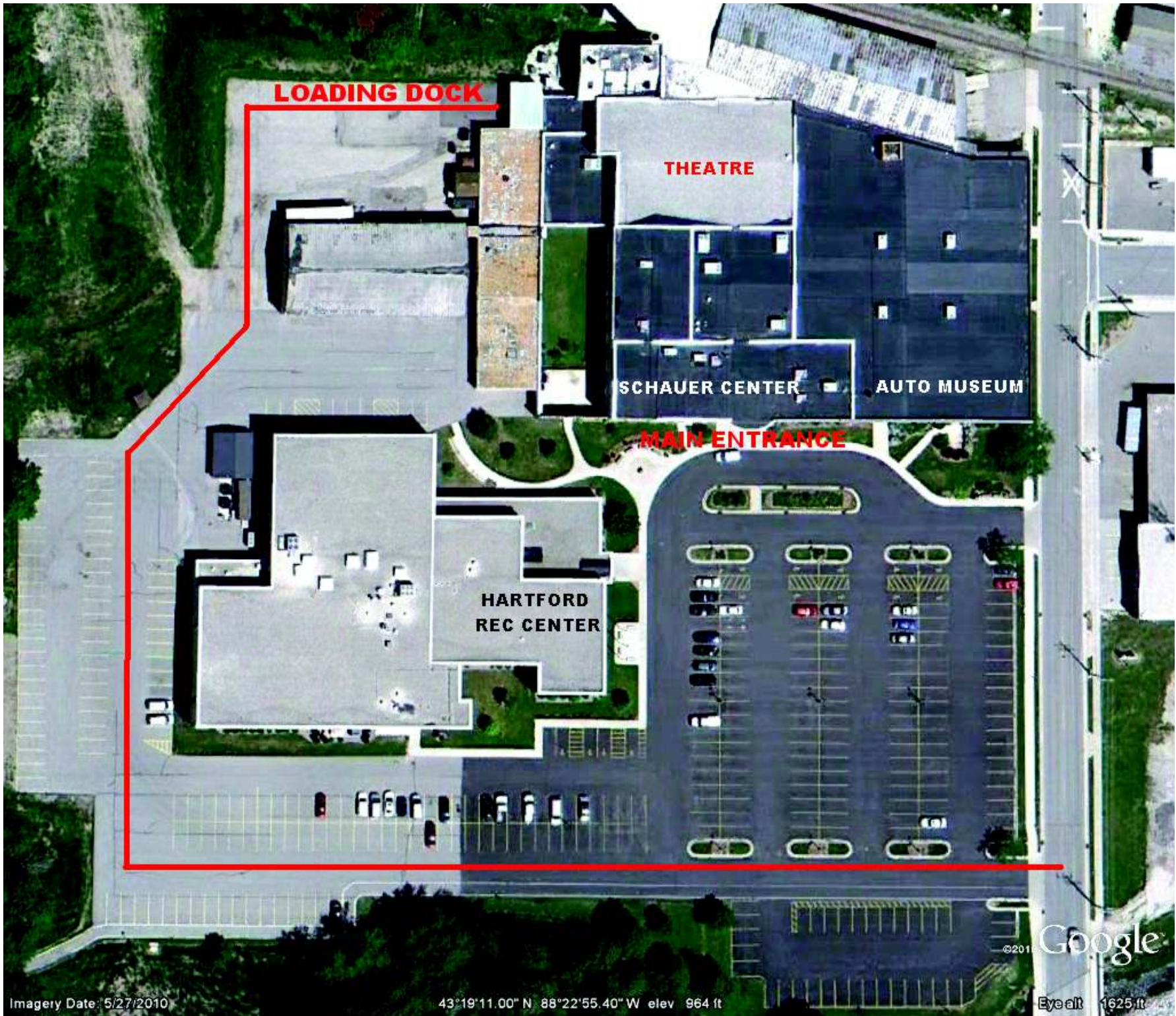
SCHAUER ARTS AND ACTIVITIES CENTER

DRESSING ROOM AREA



SCHAUER ARTS AND ACTIVITIES CENTER

SEATING PLAN



LOADING DOCK

THEATRE

SCHAUER CENTER

AUTO MUSEUM

MAIN ENTRANCE

**HARTFORD
REC CENTER**

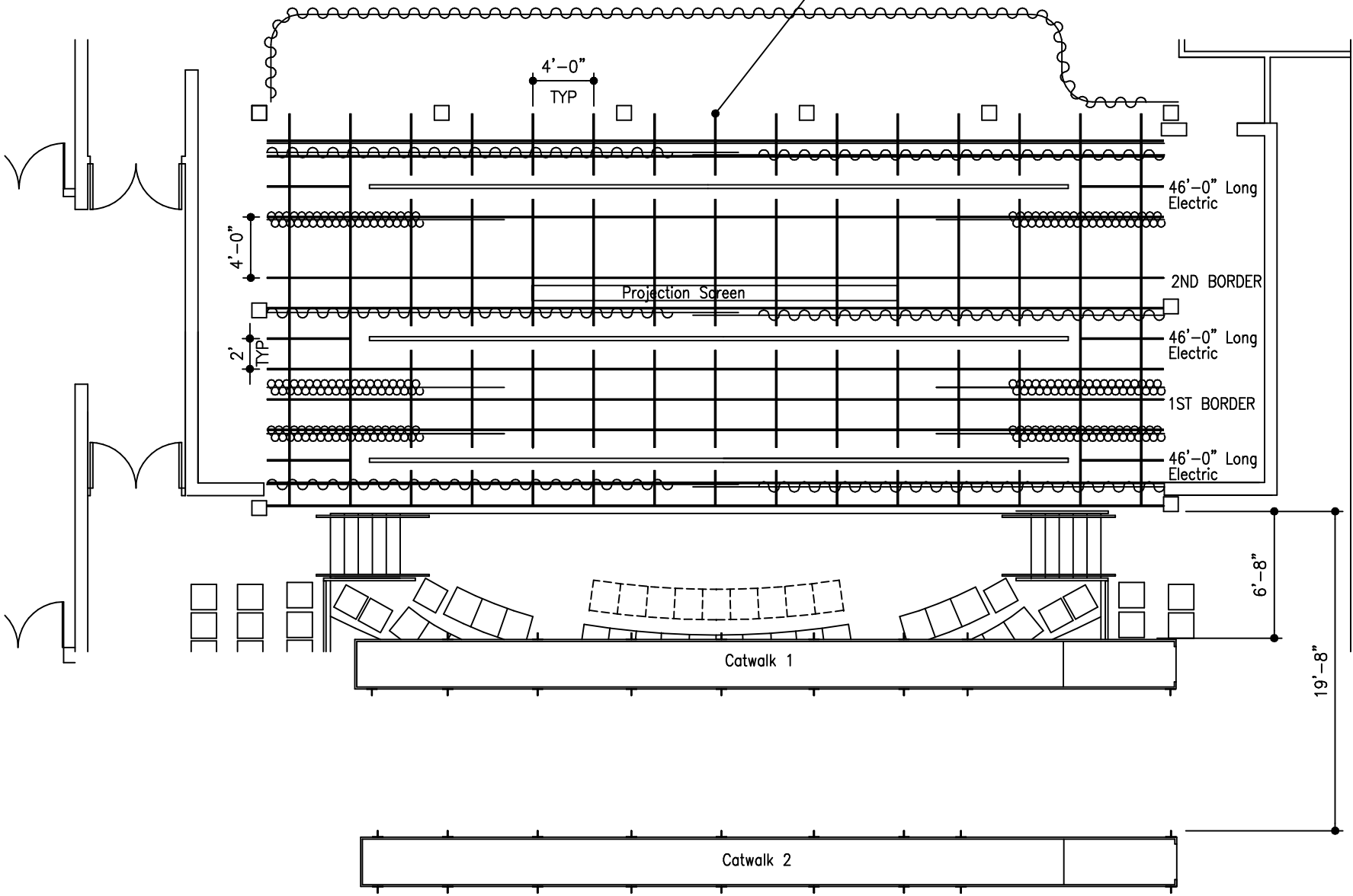
©201 Google

Imagery Date: 5/27/2010

43°19'11.00" N 88°22'55.40" W elev 964 ft

Eye alt 1625 ft

ALL GRID PIPE IS 1 1/2" OD DIA

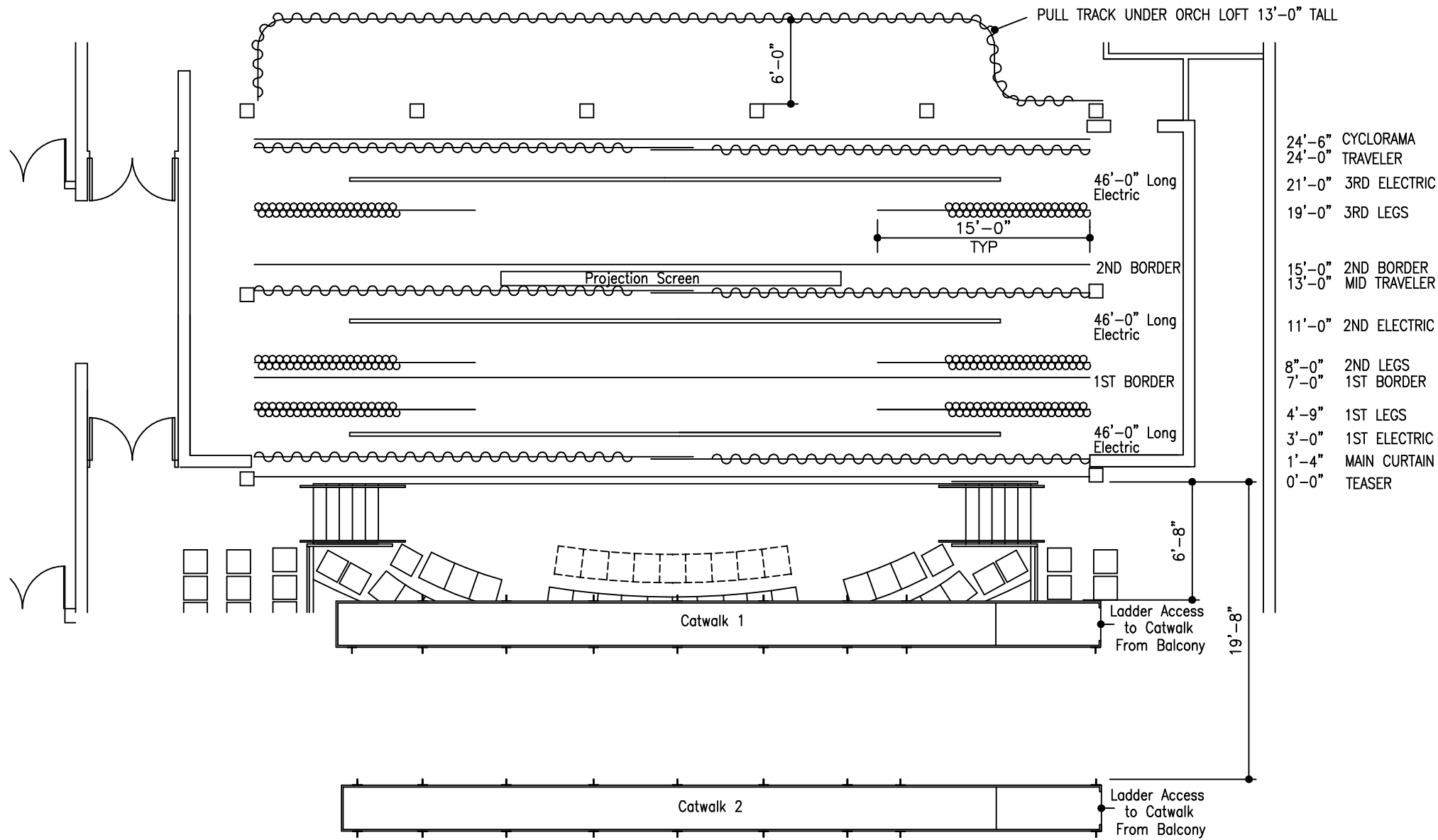


- 24'-6" CYCLORAMA
- 24'-0" TRAVELER
- 21'-0" 3RD ELECTRIC
- 19'-0" 3RD LEGS
- 15'-0" 2ND BORDER
- 13'-0" MID TRAVELER
- 11'-0" 2ND ELECTRIC
- 8'-0" 2ND LEGS
- 7'-0" 1ST BORDER
- 4'-9" 1ST LEGS
- 3'-0" 1ST ELECTRIC
- 1'-4" MAIN CURTAIN
- 0'-0" TEASER

SCHAUER ARTS AND ACTIVITIES CENTER

RIGGING PLAN W/Grid

NTS



- 24'-6" CYCLORAMA
- 24'-0" TRAVELER
- 21'-0" 3RD ELECTRIC
- 19'-0" 3RD LEGS
- 15'-0" 2ND BORDER
- 13'-0" MID TRAVELER
- 11'-0" 2ND ELECTRIC
- 8'-0" 2ND LEGS
- 7'-0" 1ST BORDER
- 4'-9" 1ST LEGS
- 3'-0" 1ST ELECTRIC
- 1'-4" MAIN CURTAIN
- 0'-0" TEASER

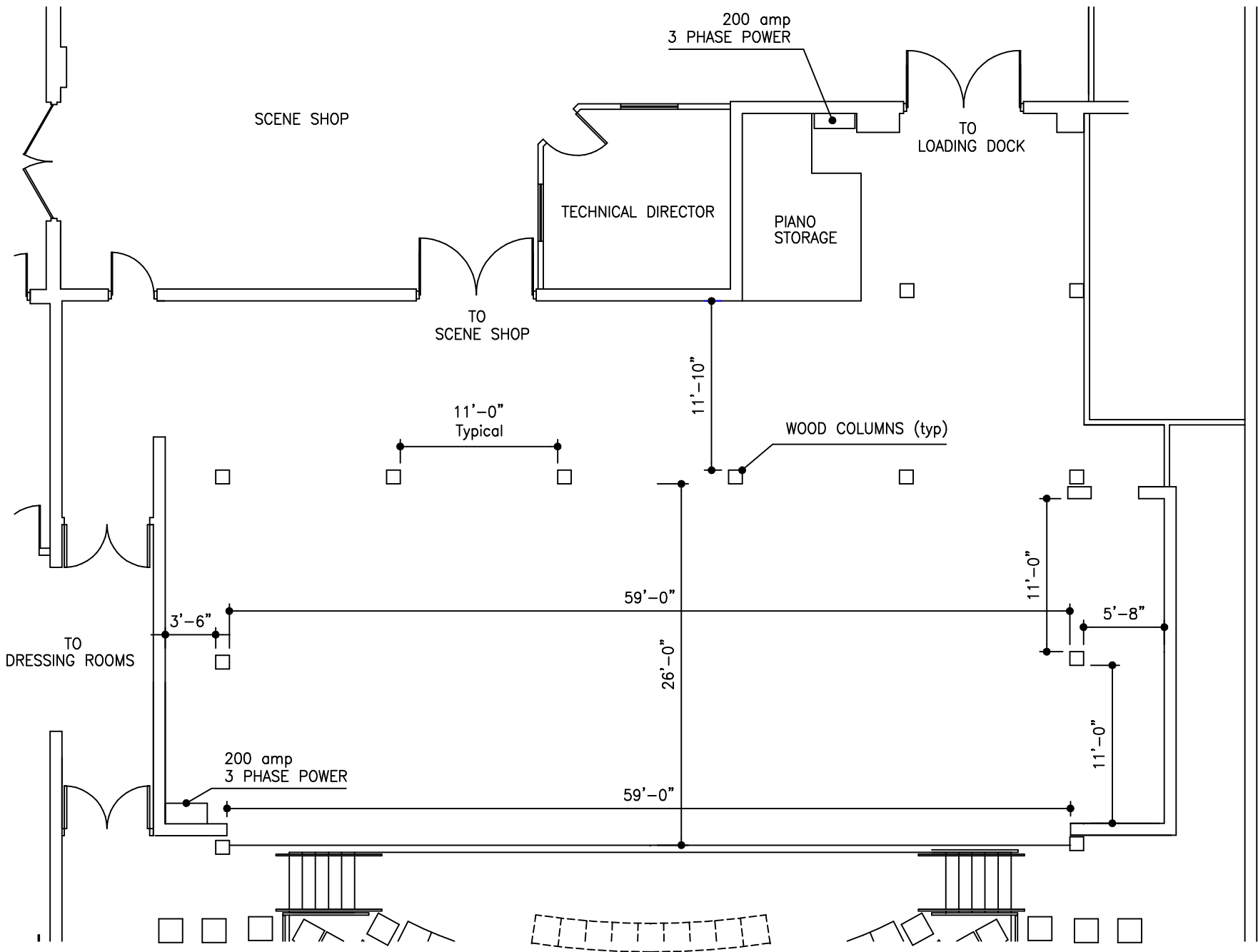
SCHAUER ARTS AND ACTIVITIES CENTER

RIGGING PLAN

NTS

Revised June 2005

All items are dead hung except for the electrics (electrics are on electric winches)



SCHAUER ARTS AND ACTIVITIES CENTER

STAGE PLAN